

HAIRMAX® Ultima 9 Classic & Ultima 12 Classic

QUICK START GUIDE



Use the LaserComb Ultima 9 Classic for 11 minutes and the Ultima 12 Classic for 8 minutes, 3 times a week, ideally every other day (for example, Monday, Wednesday, Friday).

FOR MAXIMUM BENEFIT:

- Scalp should be freshly washed (hair can be wet, dry or damp)
- Use your HairMax prior to applying styling products (these can build up and impede the laser light)
- Regularly clean the laser area with a damp cloth. Do not use harsh detergents or cleaning products on any part of your HairMax

CHARGING OPTIONS

Charge your HairMax for 2-3 hours before initial use.

OPTION 1 Charge your HairMax using the charging cradle (stand) and power cord (Figure A). Prior to placing your HairMax in the cradle, make sure your HairMax is turned off and the teeth face away from you. Plug the power cord into the cradle and the other end into an electrical wall outlet.

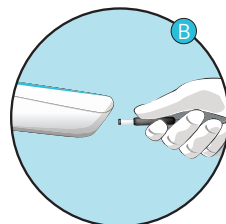
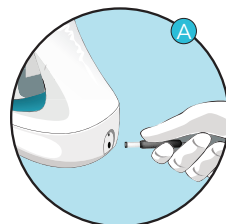
OPTION 2 Charging your HairMax by placing the power cord directly into the HairMax (Figure B) and the other end into an electrical wall outlet.

The indicator light on the power button will flash during the charging process. Once charging is complete, the light will stop flashing and remain on.

Do not use your HairMax while it is plugged into the power cord.

Prior to treatment, test your HairMax for sensitivity. For more information, see the the user manual.

Turn on the LaserComb by pressing the power button (lower button) and hold until power button light turns on (Figure C). Next, press the laser button (upper button) until it lights up. That means the LaserComb is ready for use.



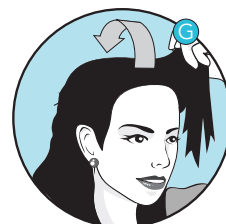
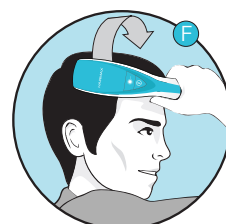
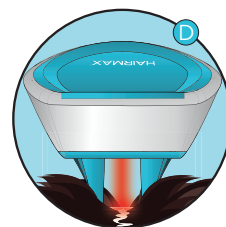
TREATMENT METHOD

To start your treatment place the LaserComb flat on your scalp so that both rows of teeth are touching the scalp (Figure D).

Start at your hairline. Move the LaserComb from front to back of scalp in a slow combing motion, stopping every ½ inch (1cm) and pausing for 4 seconds (Figure E). Do not lift the LaserComb off your scalp while combing from front to back.

Now, lift the LaserComb off your scalp and start at a new position at the hair line. Continue in this manner from front to back and then side to side (Figure F) until you cover your entire scalp with multiple passes. When the LaserComb is on it will beep and vibrate every four (4) seconds. This means that it is time to move the LaserComb to the next area of the scalp. Repeat these passes for the total treatment of 8 min for Ultima 12 Classic and 11 min for Ultima Classic 9 models.

If you have long hair, use your fingers to lift your hair out of the way while using the LaserComb to be sure that the laser energy reaches your scalp (Figure G).



After treatment, turn off the LaserComb by pressing and holding the power button (lower button) until the indicator light turns off. Store the device in the charging cradle for future use. You may leave the power cord plugged into the charging cradle at all times.

NOTE: The Ultima 9 Classic and Ultima 12 Classic turn off automatically after 12 minutes.

The HairMax® Ultima9 Classic and Ultima 12 Classic are highly effective devices when used correctly. It is manufactured using precision components and should last many years of normal use. If you experience difficulties with your device, please refer to the troubleshooting section of your user manual.

For detailed information about proper use, warnings and cautions, please take time to read the entire user manual before operating your HairMax.

Laser Light - Avoid Direct Eye Exposure

HairMax® laser devices are indicated to treat Androgenetic Alopecia, and promote hair growth in males who have Norwood-Hamilton Classifications of IIa to V and in females who have Ludwig (Savin) I-4, II-1, II-2, or frontal patterns of hair loss and who both have Fitzpatrick Skin Types I to IV.